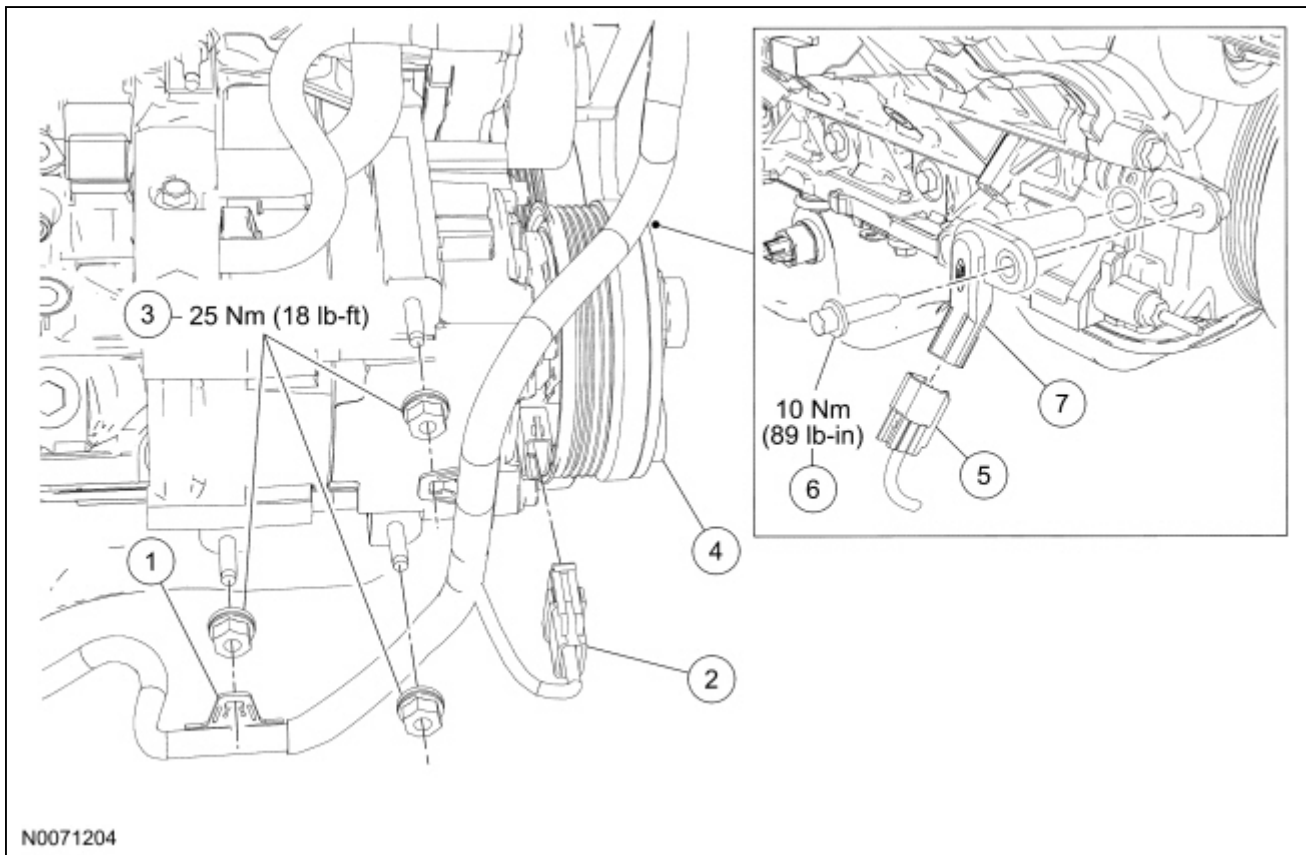


Crankshaft Position (CKP) Sensor — 4.6L (3V)



Item	Part Number	Description
1	—	Wiring harness retainer (part of 12B637)
2	14A464	A/C compressor electrical connector (part of 12B637)
3	N806184	A/C compressor stud bolts (3 required)
4	19703	A/C compressor
5	14A464	Crankshaft Position (CKP) sensor electrical connector (part of 12B637)
6	N806155	CKP sensor bolt
7	6C315	CKP sensor

Removal and Installation

1. With vehicle in NEUTRAL, position it on a hoist. For additional information, refer to [Section 100-02](#).
2. Remove the accessory drive belt. For additional information, refer to [Section 303-05](#).
3. Detach the wiring harness retainers from the A/C compressor stud bolts.
4. Disconnect the A/C compressor field coil and the Crankshaft Position (CKP) sensor electrical connectors.
5. Remove the stud bolts and position the A/C compressor aside.
 - To install, tighten to 25 Nm (18 lb-ft).
6. Remove the [CKP](#) sensor bolt and sensor.

- To install, tighten to 10 Nm (89 lb-in).

7. To install, reverse the removal procedure.
